





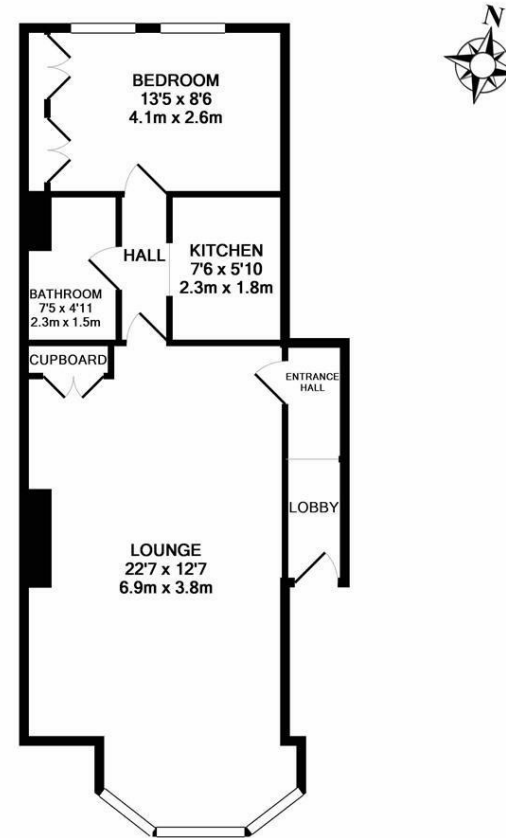
**\*\*AVAILABLE NOVEMBER 2025\*\***

**\*\*FURNISHED\*\*** A spacious raised ground floor apartment located in the heart of Brandling Village, Jesmond. Well presented and fully furnished throughout, this stylish residence boasts modern fitted kitchen and bathroom, spacious double bedroom and found in a brilliant location, walking distance to a choice of shops, cafes, boutiques and transport links.



Accessed via a well kept communal entrance hall, the property briefly comprises an internal entrance lobby; large 22ft lounge with bay window, new carpets and fitted storage space; modern fitted kitchen with appliances; modern bathroom WC; double bedroom to the rear, with fitted wardrobes. Furnished throughout to a professional standard, with gas central heating and on street permit parking to the front. A superb flat, ideal for a single professional occupant or professional couple alike.

Available 10th November 2025 | £950pcm | Raised Ground Floor Conversion Apartment | 542 Sq. ft (50.4m<sup>2</sup>) | One Double Bedroom With Fitted Wardrobes | Lounge | Modern Kitchen | Bathroom WC | Furnished | On Street Permit Parking | Brandling Village Conservation Area | Great Location | GCH | Council Tax Band: C | EPC Rating: D



TOTAL APPROX. FLOOR AREA 542 SQ.FT. (50.4 SQ.M.)

Whilst every attempt has been made to ensure the accuracy of the floor plan contained here, measurements of doors, windows, rooms and any other items are approximate and no responsibility is taken for any error, omission, or mis-statement. This plan is for illustrative purposes only and should be used as such by any prospective purchaser. The services, systems and appliances shown have not been tested and no guarantee as to their operability or efficiency can be given  
Made with Metropix ©2016

**£950 PCM**

**IMPORTANT NOTE:** These particulars and the descriptions and measurements herein do not constitute representation and whilst every effort has been made to ensure accuracy, this cannot be guaranteed.

